



Guidance for Schools on Managing Behaviour

During the school year 2024/2025, a number of publications will be issued to assist and support schools to understand behaviours. These publications have been developed to support the work already being done in schools. Support and training will be provided to schools on each of these guidance documents in due course

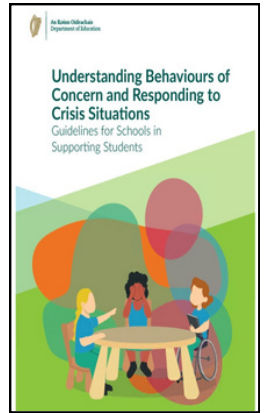
Understanding Behaviours of Concern and Responding to Crisis Situations

What is it? Guidelines for schools on Understanding Behaviours of Concern and Responding to Crisis Situations. These guidelines have been developed for schools to assist in the prevention and management of complex behaviour, where such behaviour poses imminent danger of serious physical harm. The guidelines are designed to develop and enhance schools' understanding of behaviours of concern and to assist them in managing crisis situations. A circular 0081/2024 has issued with this publication.

Who is it for? Primary, post-primary and special schools.

Publication date? December 2024.

Will there be training? Yes, a training programme consisting of 3 levels will accompany the publication of the guidelines. Special schools will be prioritised for training.



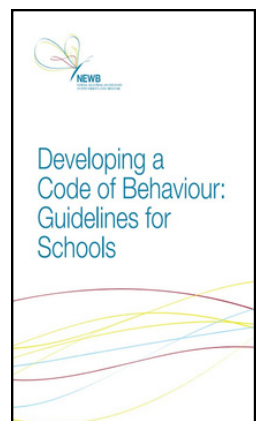
Code of Behaviour - Tusla/TESS

What is it? All schools are required to prepare and make available a code of behaviour for its students that foster a school community of care, respect, responsibility and safety for all. The revised Code of Behaviour Guidelines will be issued by Tusla (TESS) to assist schools to audit, review and revise their codes of behaviour and also outline updated procedures in relation to reduced school days, suspensions, expulsions and appeals.

Who is it for? Primary, post-primary schools and special schools.

Estimated publication date? March 2025.

Will there be training? Yes. CPD details will be circulated closer to publication time.



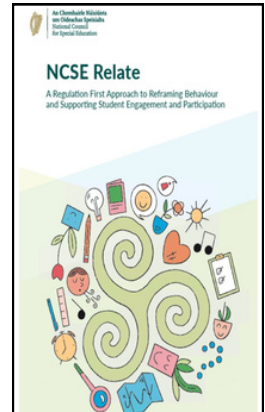
Relate Behaviour Framework - NCSE

What is it? NCSE Relate is a comprehensive resource designed to support teachers in taking a regulation first approach to reframing behaviour and supporting student engagement and participation. It is complementary to the other publications, providing a practice based perspective.

Who is it for? Primary, post-primary and special schools.

Estimated publication date? January 2025.

Will there be training? Yes. NCSE Relate will be supported by NCSE Teacher Professional Learning (TPL) seminars.



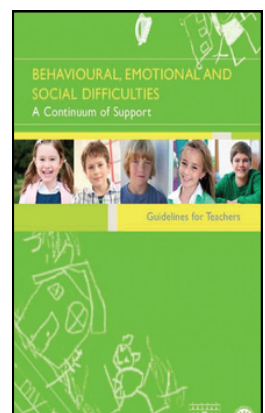
Behaviour, Emotional and Social Difficulties - NEPS

What is it? The Behaviour, Emotional and Social Difficulties (BESD) Guidelines document is being reviewed and updated to align with current best practice and to support schools to identify and respond to the range of social, emotional, wellbeing and mental health needs at each level of the Continuum of Support including universal and preventative approaches at the whole school level as well as more targeted and individualised intervention for children and young people who require additional support.

Who is it for? Primary, post-primary schools and special schools.

Estimated publication date? Late 2025.

Will there be training? Yes, training will follow publication.



Other relevant publications

Bí Cineálta Procedures:

What is it? The Bí Cineálta Procedures replaced the Anti-Bullying Procedures for Primary and Post-Primary Schools (2013).

Who is it for? Primary, post-primary schools and special schools.

Publication date? Hard copies of the Bí Cineálta procedures were sent to all schools in September 2024.

Will there be training? A suite of professional learning resources has been made available for school leaders and school staff. Resources will be available shortly for boards of management members, through the relevant management bodies, and parents, through the National Parents Council.

Child Protection Procedures:

What is it? Updated Child Protection Procedures for schools to further strengthen the measures that schools take to ensure the protection and safeguarding of children in our schools.

Who is it for? Primary, post-primary schools and special schools,

Estimated publication date? Early 2025

Will there be training? Yes, training will be announced following publication.